

CUSTOM HOME PLAN · NORTH GEORGIA

# The Ray

*A modern farmhouse with a garage wing and a wraparound porch.*

FRONT ELEVATION



FRONT ELEVATION

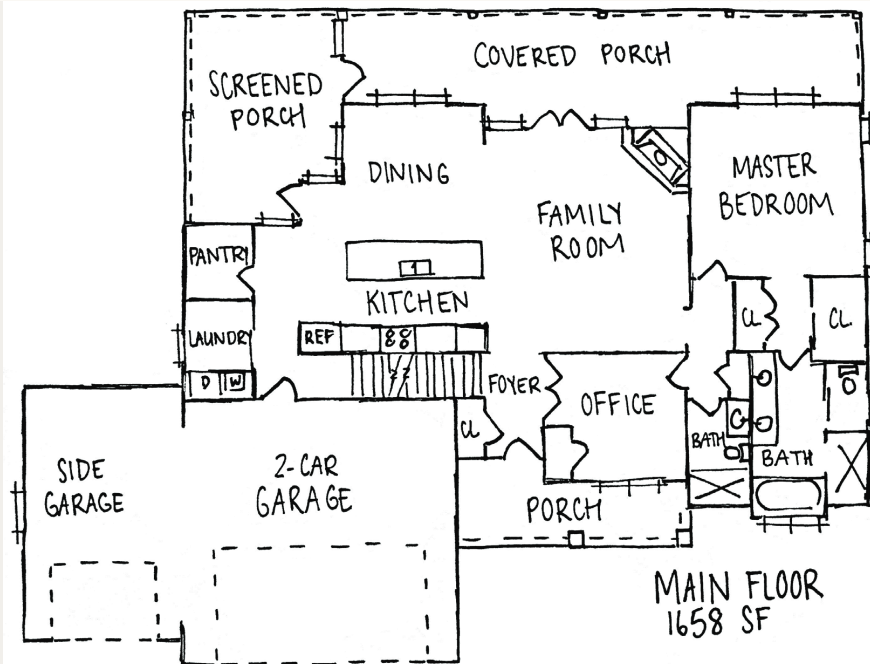
THE PLAN

The Ray spreads out in modern-farmhouse style — a two-story main with a metal-roof wraparound porch, a stone chimney, and a generous garage wing under matching gables. Room for the whole family, inside and out. Designed around you and your land — never the same house twice.

- ◆ Modern farmhouse elevation
- ◆ Stone chimney
- ◆ Board-and-batten gables
- ◆ Metal-roof wraparound porch
- ◆ Attached garage wing
- ◆ Two-story main

FLOOR PLANS

DRAG PLAN IMAGES INTO THE FRAMES



MAIN FLOOR PLAN

*Your Land. Your Vision. Built With Precision.*

270 E Main St, Suite B · Canton, GA · 770-720-2052 · sales@pchb.us

Send us your lot — we'll return a ballpark, typically within ±5%.

**GET A BALLPARK ESTIMATE**